

ELITE
tie rack

310.3000.xx.xxx

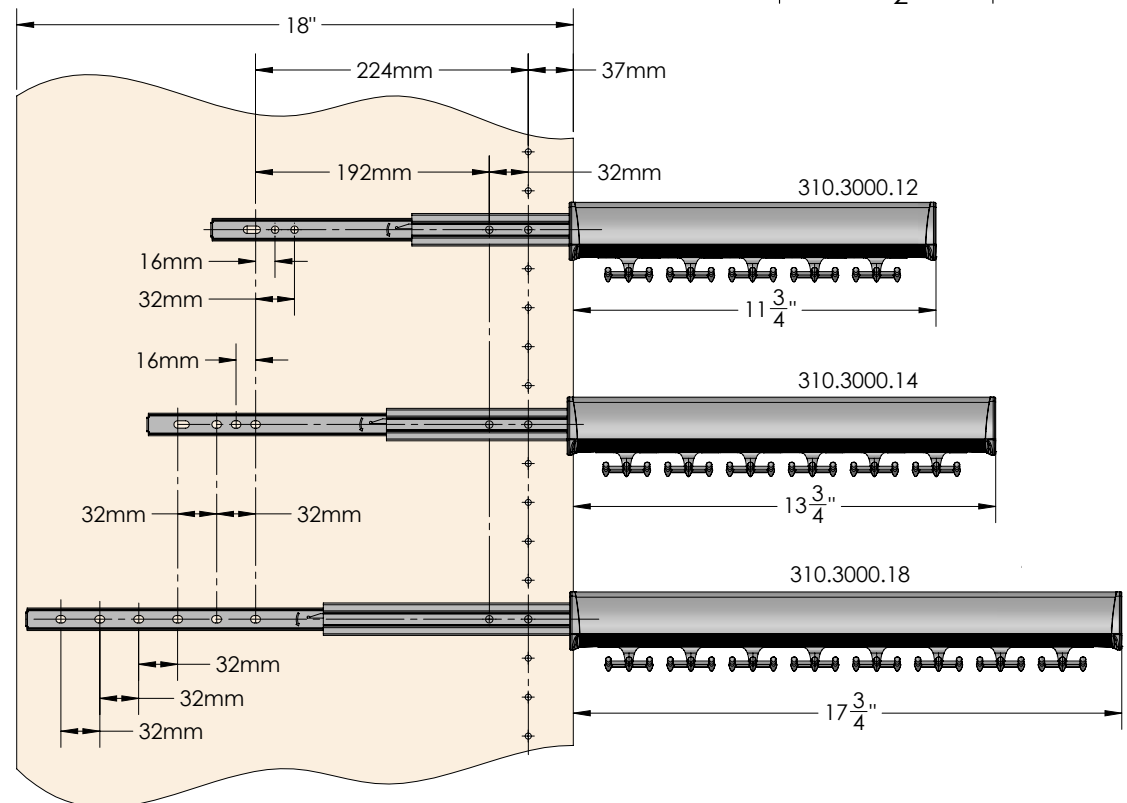
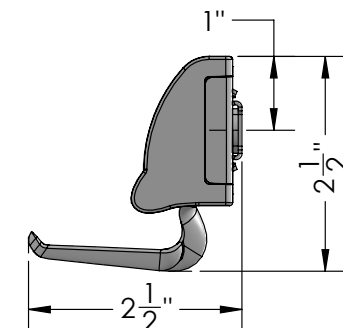
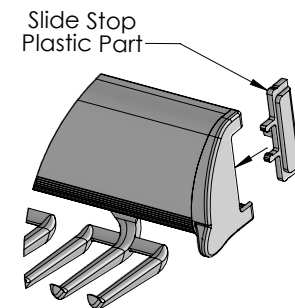
FEATURES

Designed to hold the ties gently at their center

Great for storing necklaces too

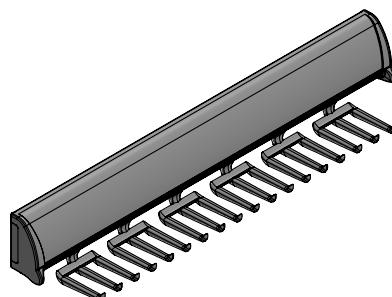
Full extension ball bearing slides make it easy to neatly stow away

All mounting hardware is included and concealed when installed



DIMENSIONS

SPECS



FLEXIBLE INSTALLATION
Conveniently install on either the left or right side of a panel.

310.3000.^(LENGTH)xx.^(FINISH)xxx

LENGTH:

- 12" 15 HOOKS
- 14" 18 HOOKS
- 18" 24 HOOKS

FINISH:

- CR POLISHED CHROME
- MALCR MATTE ALUMINUM W/ CHROME
- MNL MATTE NICKEL
- SG SLATE
- MG MATTE GOLD
- ORB OIL RUBBED BRONZE

OPTIONS



310.3000.14.MAL
PATENT #: 7137515

FINISHED PRODUCT