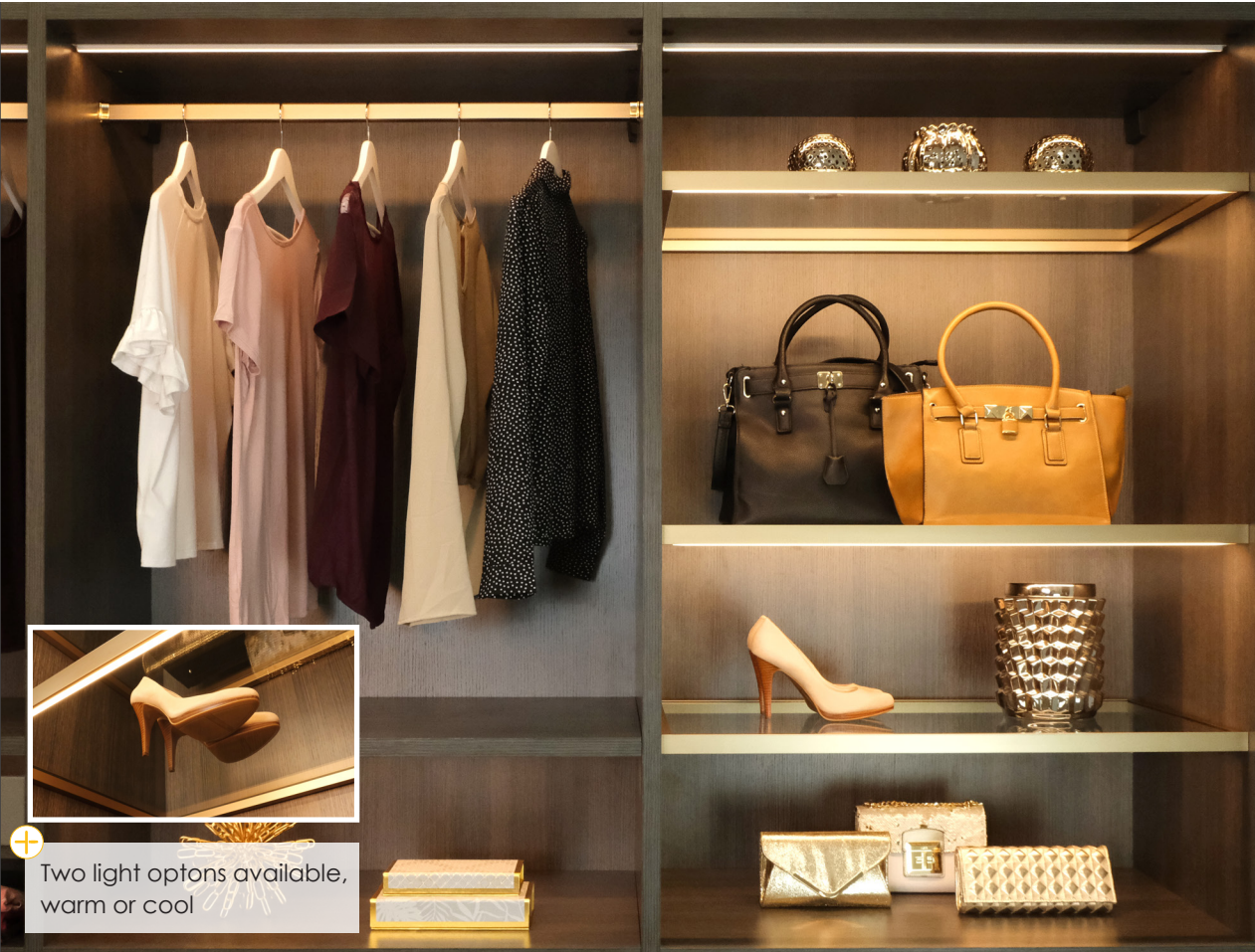


illuminated glass shelf

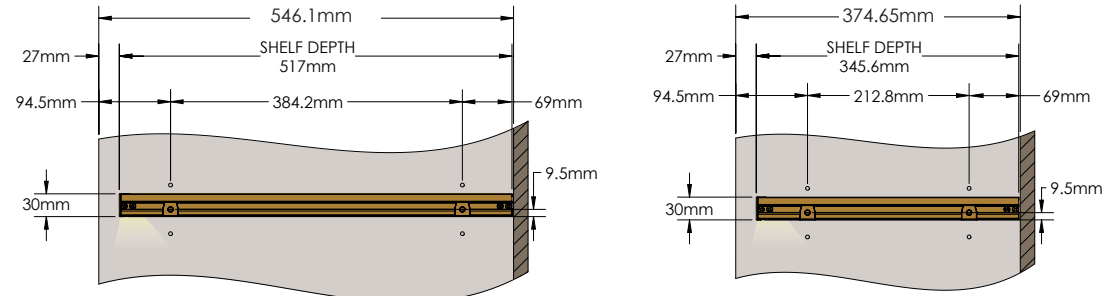
14" 310.1200.xx.xx.xxx
21" 310.2200.xx.xx.xxx
Filler 310.2123.xx.xxx

FEATURES

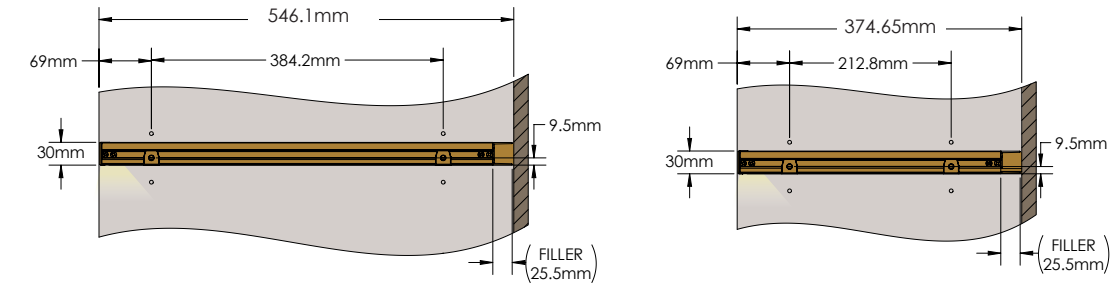
- Great way to showcase jewelry, ties, belt, or sunglasses in the organizer below
- Integrated illumination – works with the Loox LED lighting system
- The shelf frame finish coordinates with other accessories, and the glass introduces a new element in the space
- The Glass Shelf Filler piece extends the shelf to the back panel in a design without doors



Two light options available, warm or cool



With Filler:



DIMENSIONS

SPECS

	14"	21"
Shelf	310.1200.18.xx.xxx (LIGHT)(FINISH)	310.2200.18.xx.xxx (LIGHT)(FINISH)
	310.1200.24.xx.xxx	310.2200.24.xx.xxx
	310.1200.30.xx.xxx	310.2200.30.xx.xxx
	310.1200.36.xx.xxx	310.2200.36.xx.xxx

	Filler
	310.2123.18.xxx (FINISH)
	310.2123.24.xxx
	310.2123.30.xxx
	310.2123.36.xxx

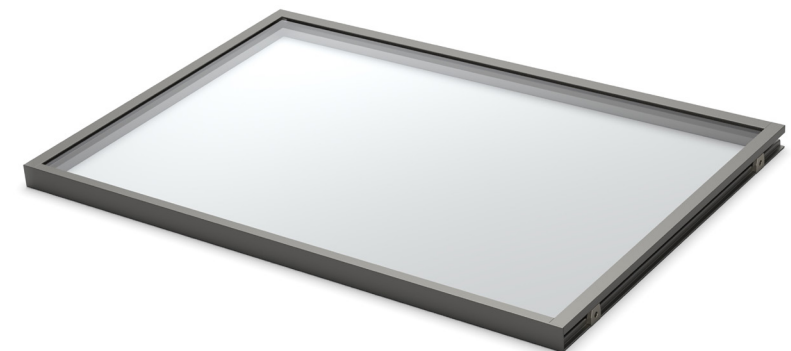
WIDTH: 18" 24" 30" 36" **DEPTH:** 14" 21"

FINISH: MAL (MATTE ALUMINUM) MNL (MATTE NICKEL) SG (SLATE) MG (MATTE GOLD)

LIGHT: 3K (WARM) 4K (COOL)

LOAD CAPACITY

The maximum recommended static load capacity for the Illuminated Glass Shelf is 25 kg (55 lbs). Under this load, the expected maximum deflection in the middle of the shelf would be ≤ 1mm.



310.2200.36.xx.SG

FINISHED PRODUCT

OPTIONS