

# TAG Hardware Package

---



*This is a TAG Hardware Product, the items in this catalog can be ordered from Hafele. Detailed mounting information can be found by tracking the TAG Code to the TAG product at [taghardware.com](http://taghardware.com). If you have any product questions please contact TAG Hardware for further support.*

This package includes products from the TAG Engage and Elite collections.

You can click on any of the pages or topics below to 'zoom' to that page or topic.

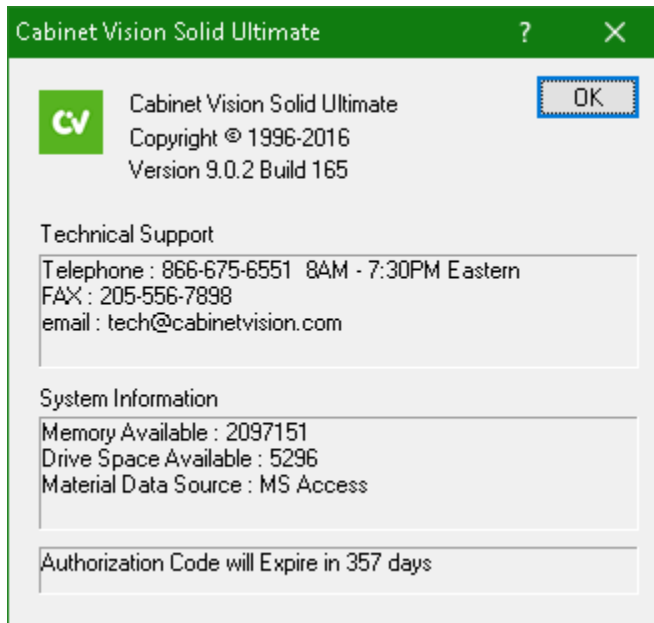
### Table of Contents

- Introduction ..... 3
  - Installation Notes ..... 4
    - Network Installation ..... 4
    - General Notes ..... 4
  - Package Contents..... 5
- Importing the TAG Hardware Package ..... 6
  - TAG Hardware Package - Import Options..... 10
  - TAG Hardware Package - Materials ..... 11
  - TAG Hardware Package – Closet Rod Material Schedules..... 12
    - ..... 12
  - TAG Hardware Package - System Parameters ..... 13
- Room Parameters ..... 14
- Assembly Parameters/Attributes (General) ..... 15
  - Additional Assembly Attributes ..... 16
  - How to use the TAG Hardware Package ..... 17
  - Shoe Fence ..... 19
  - Tilt-Out Hamper ..... 21
  - Closet Rods..... 21
- Revisions ..... 23

## Introduction

Thank you for downloading the TAG Hardware Package. If you did not receive this package from the Cabinet Vision eSupport website (<http://esupport.planit.com/>) then the contents of this package may not be correct or functional. Only install Cabinet Vision Solid Setup Packages from a trusted source.

This package is compatible only with Cabinet Vision Solid version 9 (or higher) and will not work with any previous versions.



This package is designed to be used with Cabinet Vision for Closets along with the Planit Closet Package.

If you require customization of this package or any of its contents, please contact Professional Services via cabinetvision.com (<http://www.cabinetvision.com/p2/customprogramming>).

If you need additional assistance with this package please use eSupport, our 24 hour online resource at (<http://esupport.planit.com/>).

The following instructions will help you to import and use this package in Solid.

Thank you and enjoy!

## Installation Notes

- It is strongly recommended that you create a backup of your current database prior to importing this package. The Backup and Transferring Standards topics in the Solid help file have more information on this.
- This package is NOT intended for versions prior to Cabinet Vision version 9.

## Network Installation

If installing this package on a network which includes a Network Installation of Solid then please follow these steps:

- The package is best installed at the server.\*
- All users must be logged out of Solid. See the Status tab of the Network Administrator to Lock Out All Users.
- After the package has been installed, run Update Version and Unlock Users.

\* If the server is unavailable then the package can be installed at a workstation but the rest of the steps must be followed.

## General Notes

- This package was created using metric standards and can be used in either metric or inches.
- Please report any problems with this package on the CV 9 forum on eSupport.
- Newer or updated versions of this package can be found at the CV Tech Packages page: ([http://esupport.planit.com/cabinet\\_vision/m/cv\\_tech\\_packages](http://esupport.planit.com/cabinet_vision/m/cv_tech_packages))
- The contents of this package should not be modified. If this package fails to function correctly after modification then you can resolve this by doing one of the following:
  - Re-import the original package and allow it to overwrite existing items.
  - Seek assistance on eSupport, our 24 hour online resource (<http://esupport.planit.com/>)
  - Contact Professional Services (<http://www.cabinetvision.com/p2/customprogramming>)

## Package Contents

This package contains the following items:

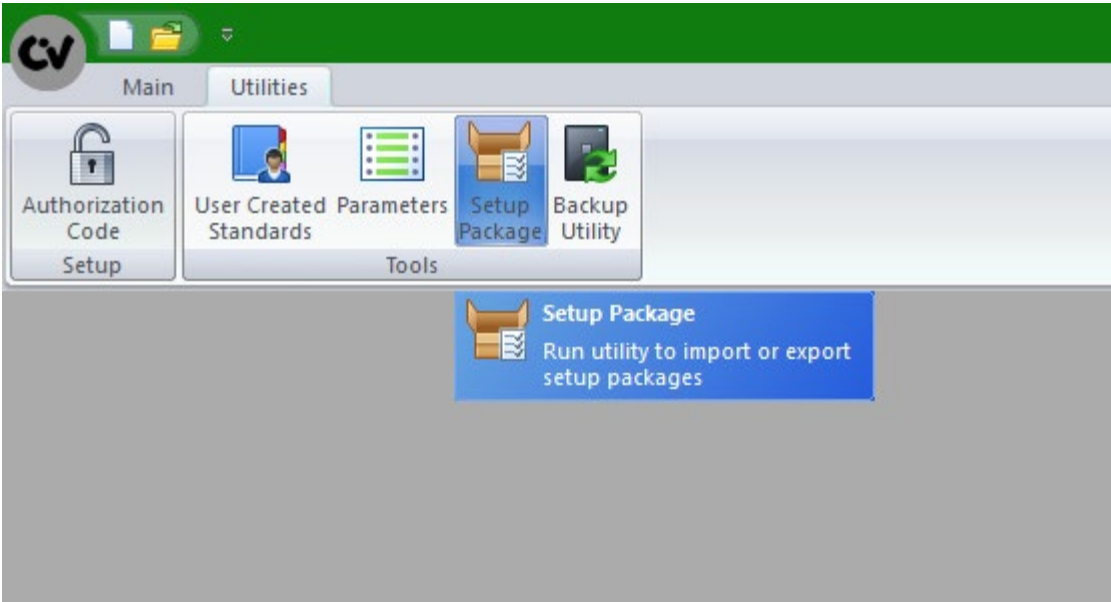
- 26 User Created Standards (appended with the word TAG).
- 18 Closet Rod Material Schedules
- Materials which include 3D models for TAG Closet Hardware
- One TAG Hardware Object Library
- 11 System Parameters

Functionality: this package includes Hardware Objects which can be selected and placed from an Object Catalog (via drag and drop). This package also includes Integrated Hardware Objects which are integrated into the database.

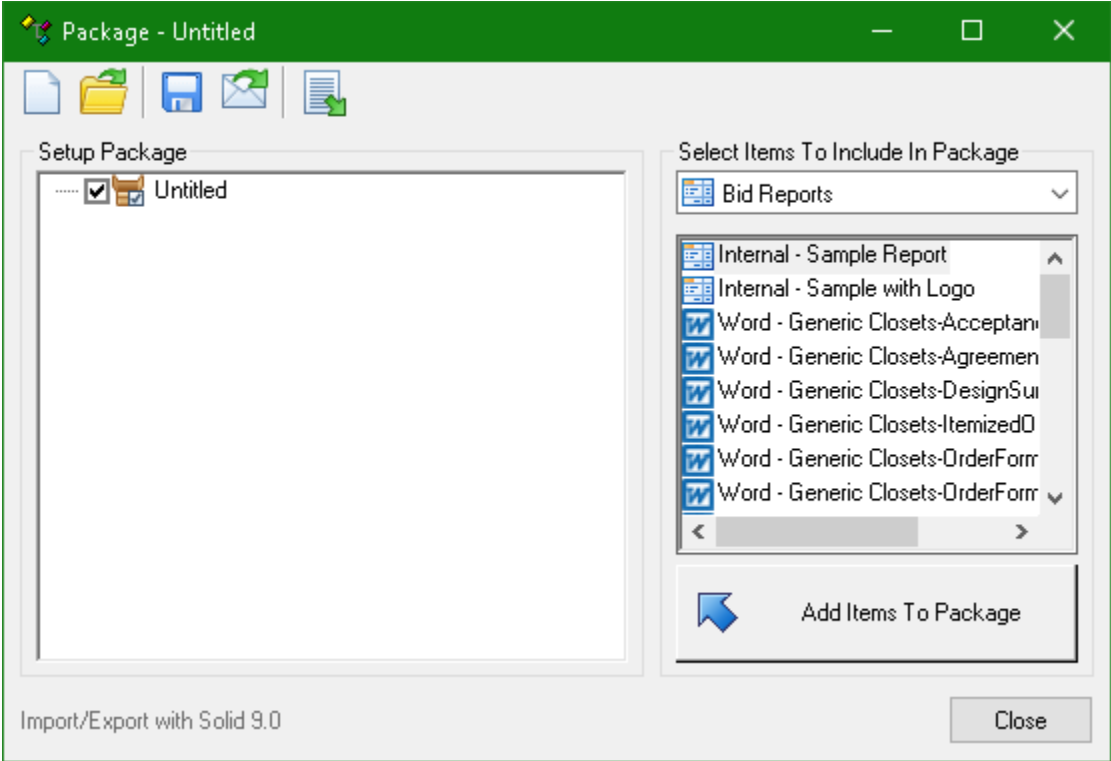
More information regarding functionality will be provided throughout this document.

# Importing the TAG Hardware Package

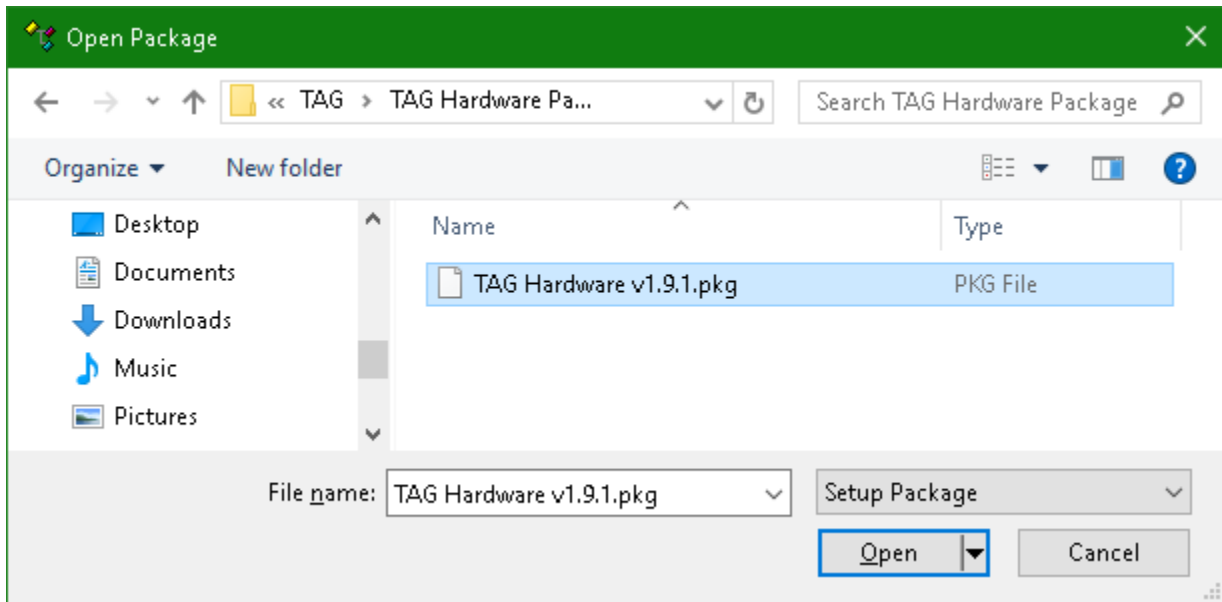
At the Solid splash screen, click the Utilities menu and then select 'Setup Package'



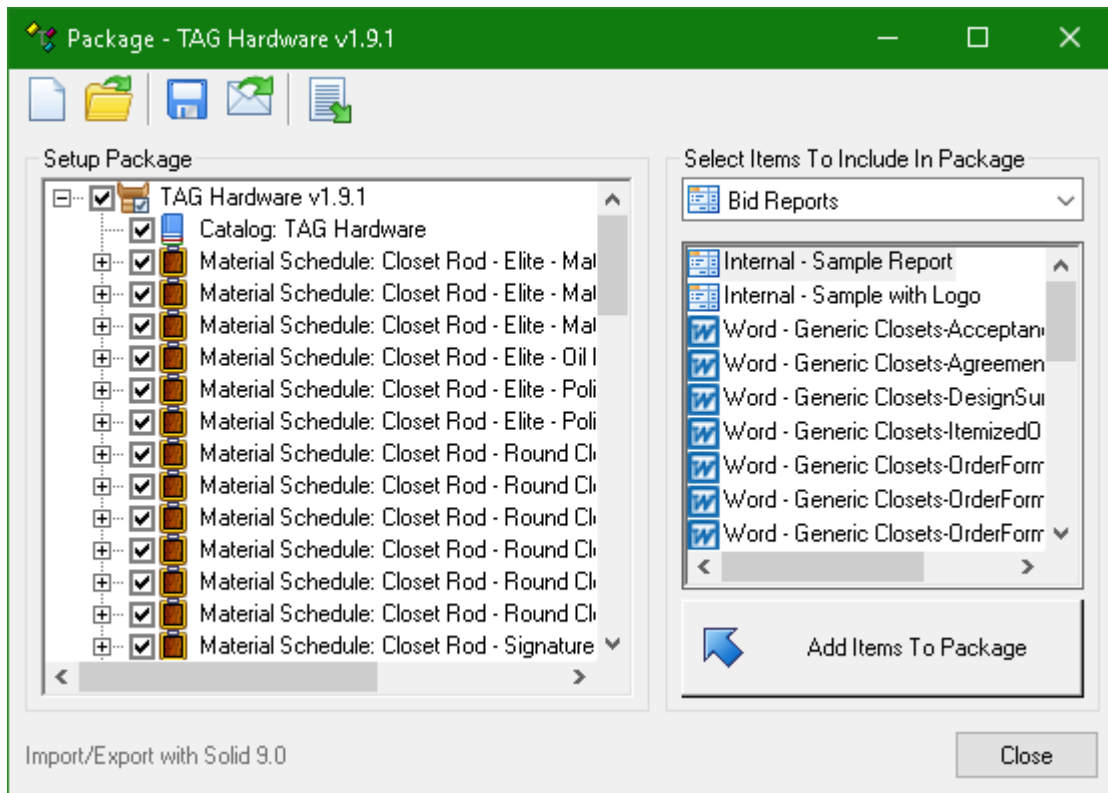
The 'Package' utility should then appear on your screen:



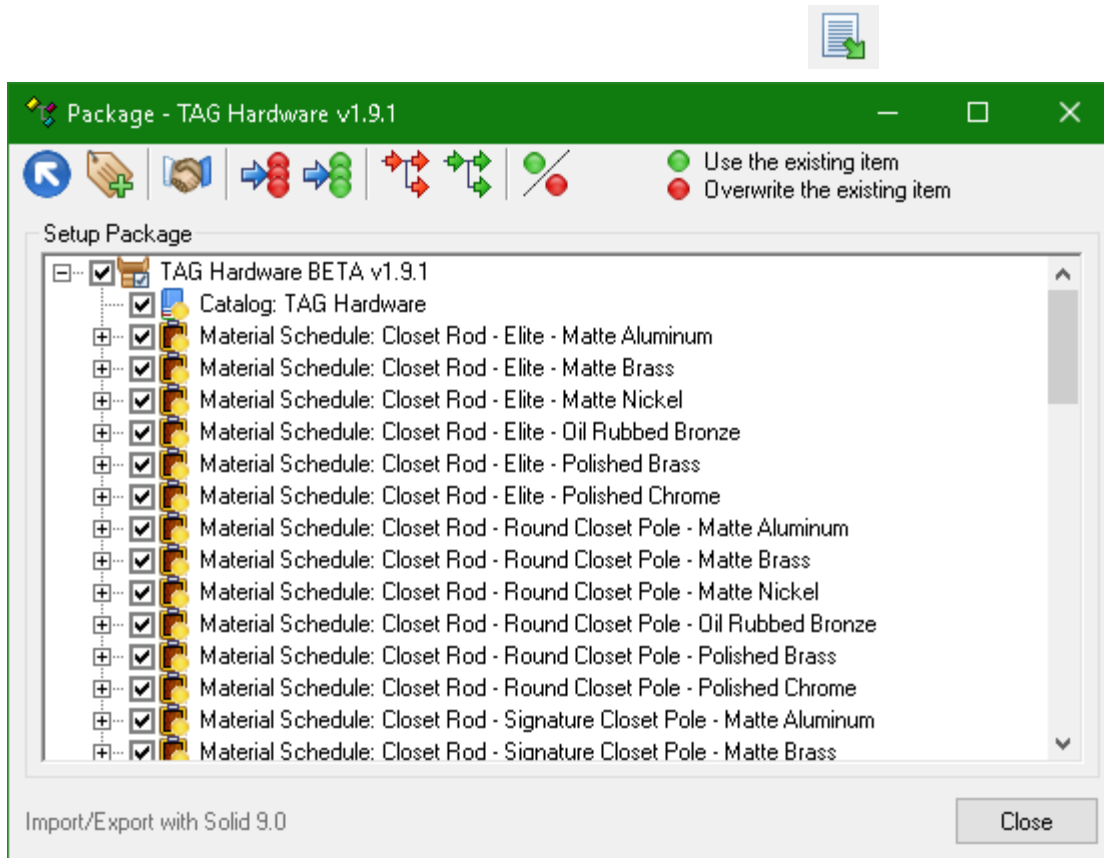
**cabinet vision**



The Package window should now display the contents of the TAG Hardware package and should look like this:







Please note the following details:

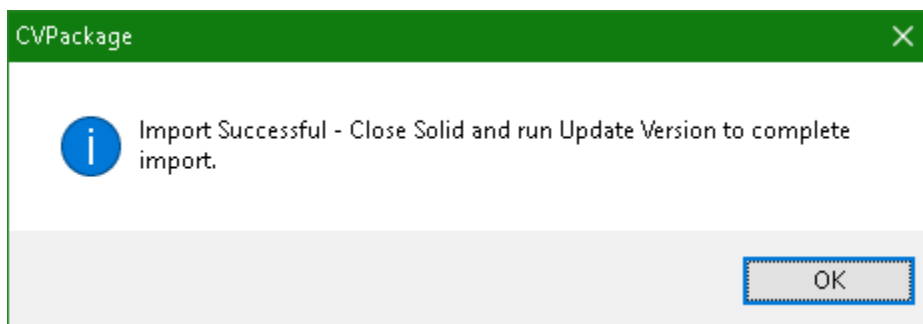


## TAG Hardware Package - Import Options

There are five options in the toolbar, which allow you to choose how to import a Setup Package.



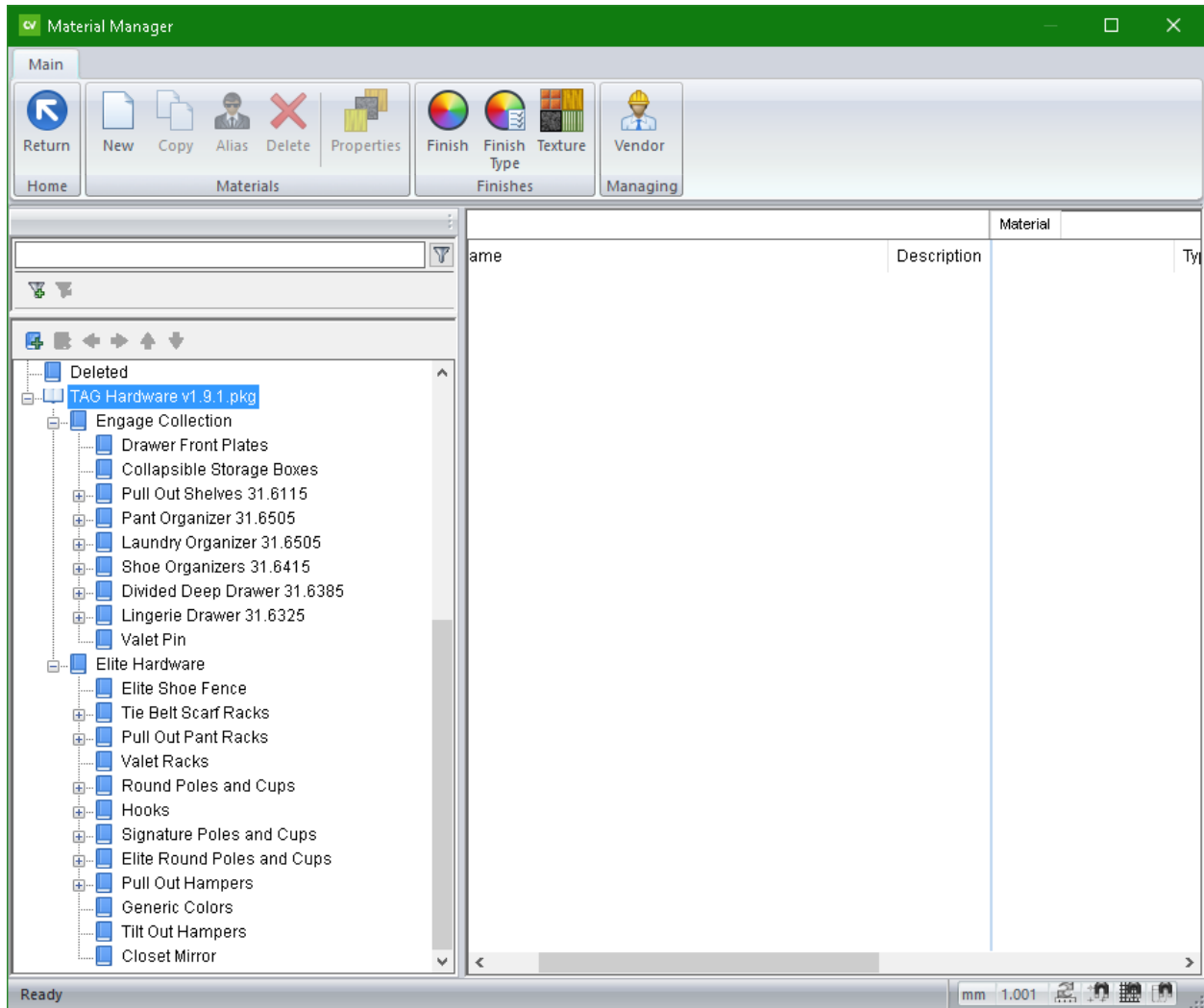
**Turn On/Off Overwrite Mode** - Allows you to overwrite existing items by selecting them individually. This will cause items in the Package to either overwrite the existing item or to use the existing item.



Once the package is imported you will be informed that you have successfully imported the Package into Solid and you will need to close Solid and run Update Version before continuing to use Solid.

## TAG Hardware Package - Materials

Materials included in this package are contained and organized within the TAG Hardware v1.9.1.pkg group (folder) in the Material Manager.

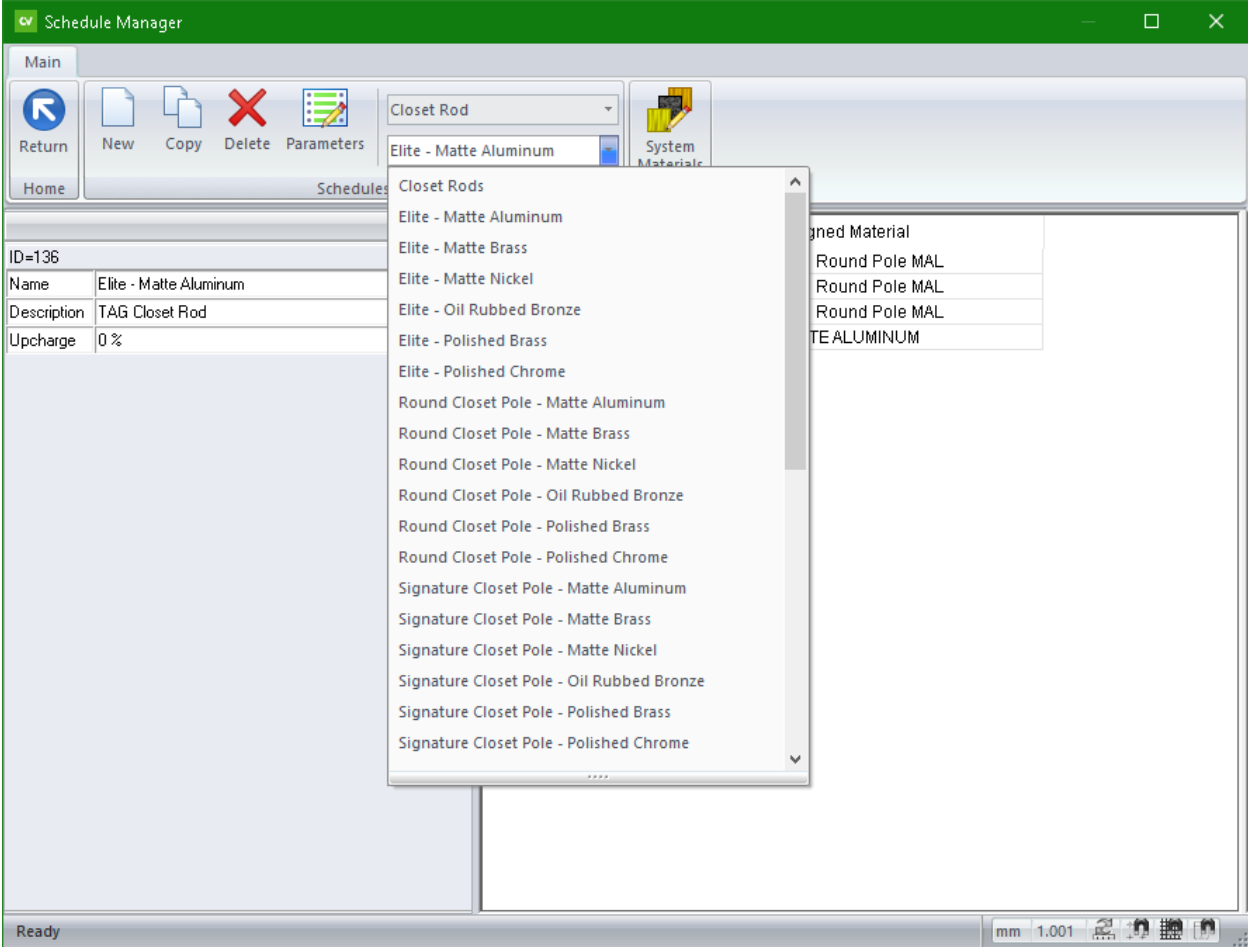


If you wish to do so you can add pricing and vendor information to the TAG Hardware Materials that you use here.

You can also modify line boring hole values such as setback and diameter here as well.

# TAG Hardware Package – Closet Rod Material Schedules

The Closet Rod Material Schedules allows you to select any style of TAG Closet Rod in any of the available finishes.



With the exception of modification to the Upcharge field there are no recommended modifications for the Closet Rod Material Schedules.

## TAG Hardware Package - System Parameters

The parameters displayed below are included in the Setup Package and are required for the proper function of this catalog.

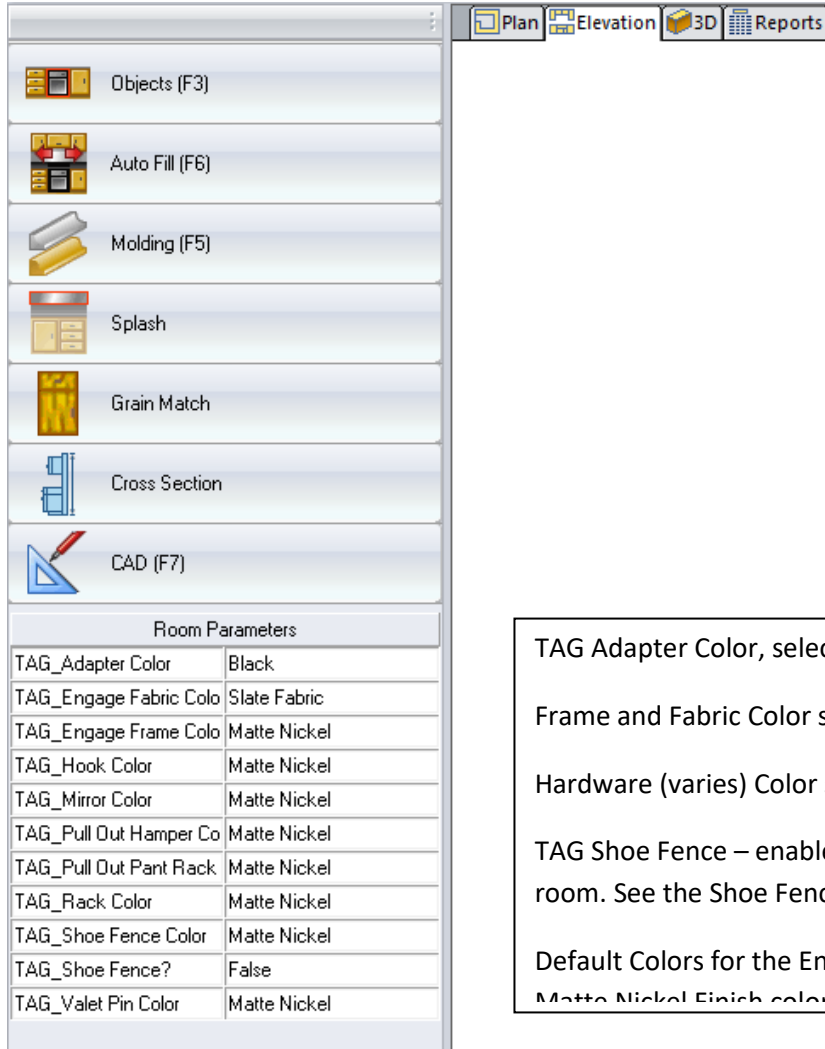
| System Parameters                   |                              |                  |         |                          |
|-------------------------------------|------------------------------|------------------|---------|--------------------------|
|                                     | Prompt                       | Parameter        | Type    | Value                    |
| <input checked="" type="checkbox"/> | TAG_Adapter Color            | rAdapter_Color   | Integer | <Ist>Black=1 White=2     |
| <input checked="" type="checkbox"/> | TAG_Engage Fabric Color      | rEngFab_Color    | Integer | <Ist>Slate Fabric=2 Bea  |
| <input checked="" type="checkbox"/> | TAG_Engage Frame Color       | rEngFrm_Color    | Integer | <Ist>Matte Nickel=2 Mat  |
| <input checked="" type="checkbox"/> | TAG_Hook Color               | rHook_Color      | Integer | <Ist>Matte Nickel=4 Poli |
| <input checked="" type="checkbox"/> | TAG_Mirror Color             | rMir_Color       | Integer | <Ist>Matte Nickel=4 Mat  |
| <input checked="" type="checkbox"/> | TAG_Pull Out Hamper Color    | rHamp_Color      | Integer | <Ist>Matte Nickel=5 Poli |
| <input checked="" type="checkbox"/> | TAG_Pull Out Pant Rack Color | rPant_Rack_Color | Integer | <Ist>Matte Nickel=5 Poli |
| <input checked="" type="checkbox"/> | TAG_Rack Color               | rRack_Color      | Integer | <Ist>Matte Nickel=4 Poli |
| <input checked="" type="checkbox"/> | TAG_Shoe Fence Color         | rShoFen_Color    | Integer | <Ist>Matte Nickel=4 Mat  |
| <input checked="" type="checkbox"/> | TAG_Shoe Fence?              | rSho_Fen         | Boolean | 0                        |
| <input checked="" type="checkbox"/> | TAG_Valet Pin Color          | rValet_Color     | Integer | <Ist>Matte Nickel=4 Poli |
| <input type="checkbox"/>            |                              |                  |         |                          |
| <input type="checkbox"/>            |                              |                  |         |                          |

There are no recommended user modifications here.

## Room Parameters

Room Parameters displayed in the sidebar allow you to select the Finish Color, Fabric Color for all TAG Hardware objects in the room. (Shoe Fence is covered in more detail below).

If any object should have different selections than the room then you can select that object and change its Attributes (see next page).



| Room Parameters           |              |
|---------------------------|--------------|
| TAG_Adapter Color         | Black        |
| TAG_Engage Fabric Color   | Slate Fabric |
| TAG_Engage Frame Color    | Matte Nickel |
| TAG_Hook Color            | Matte Nickel |
| TAG_Mirror Color          | Matte Nickel |
| TAG_Pull Out Hamper Color | Matte Nickel |
| TAG_Pull Out Pant Rack    | Matte Nickel |
| TAG_Rack Color            | Matte Nickel |
| TAG_Shoe Fence Color      | Matte Nickel |
| TAG_Shoe Fence?           | False        |
| TAG_Valet Pin Color       | Matte Nickel |

TAG Adapter Color, selection for Face Adapter Color

Frame and Fabric Color selection for the Engage Collection

Hardware (varies) Color selection for various TAG objects

TAG Shoe Fence – enables Shoe Fence to be applied for the room. See the Shoe Fence topic for more information.

Default Colors for the Engage Collection are Slate Fabric and Matte Nickel Finish color

# Assembly Parameters/Attributes (General)

Selecting any TAG Hardware Object will display attributes for that object, allowing it to be customized differently than specified for the room.

| Attributes          |              |
|---------------------|--------------|
| Align to lineboring | True         |
| Bore by Opening     | False        |
| Engage Fabric Color | Room Default |
| Engage Frame Color  | Room Default |



## Additional Assembly Attributes

### **Align to Lineboring**

When set to True the object will always snap to your existing lineboring.

When set to False the object will ignore the existing lineboring and can be placed anywhere.

### **Mount Hole Position**

Allows the Mounting Hole position to be changed in the Y axis as needed for customization.

Note: this attribute will only appear when 'Align to lineboring' is set to False.

### **Bore By Opening**

When set to True will allow this object to create its own line boring within the opening.

When set to False (by default) will allow this object to use the line boring specified in Assembly Properties (construction method).

### **Engage Fabric Color**

Engage Fabric Color by default is set to match the Room attribute. Changing it here will allow this object to use a different selection than specified for the room.

### **Engage Frame Color**

Engage Frame Color by default is set to match the Room attribute. Changing it here will allow this object to use a different selection than specified for the room.

### **Divider Quantity**

*This attribute is only available for the Engage Divided Shelf* and allows you to order additional Dividers.



## How to use the TAG Hardware Package

Note: Objects from the TAG Hardware catalog must be placed within a Closet Assembly at the Assembly level.

### **The required order of operation for placing a TAG Hardware Object**

Insert any Closet Assembly which does not include End Panels (Left and Right End Type should be set to No End\*).

Take the Closet Assembly to the Assembly level – Face view.

Access the TAG Hardware catalog from Objects in the sidebar and select the desired object.

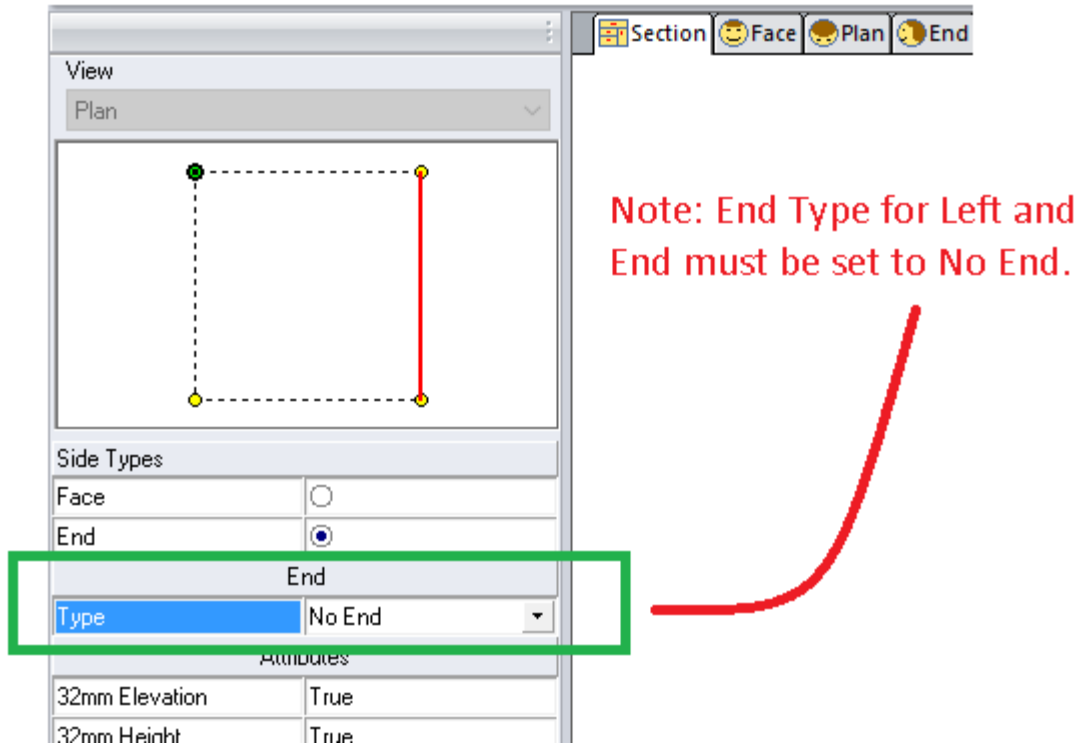
Be sure to place the TAG Hardware fully within the Closet Assembly opening as objects placed outside of the opening will not function correctly.

Note: the width of the Closet Assembly must match the available widths of the object. IE: If the object is available in widths of 18", 24", 30" and 36" then the Closet Assembly width must also be 18", 24", 30" or 36".

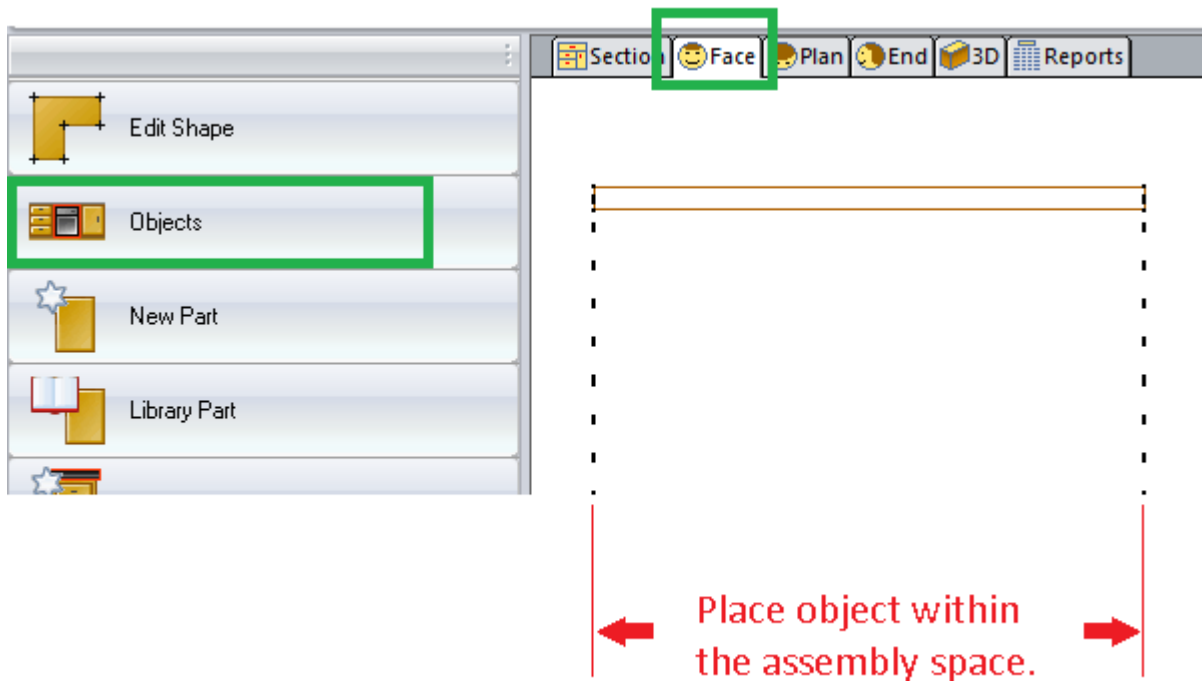
### **Use these steps to place a TAG Hardware Object:**

Take any valid\* Closet Assembly to the assembly level at the Face view.

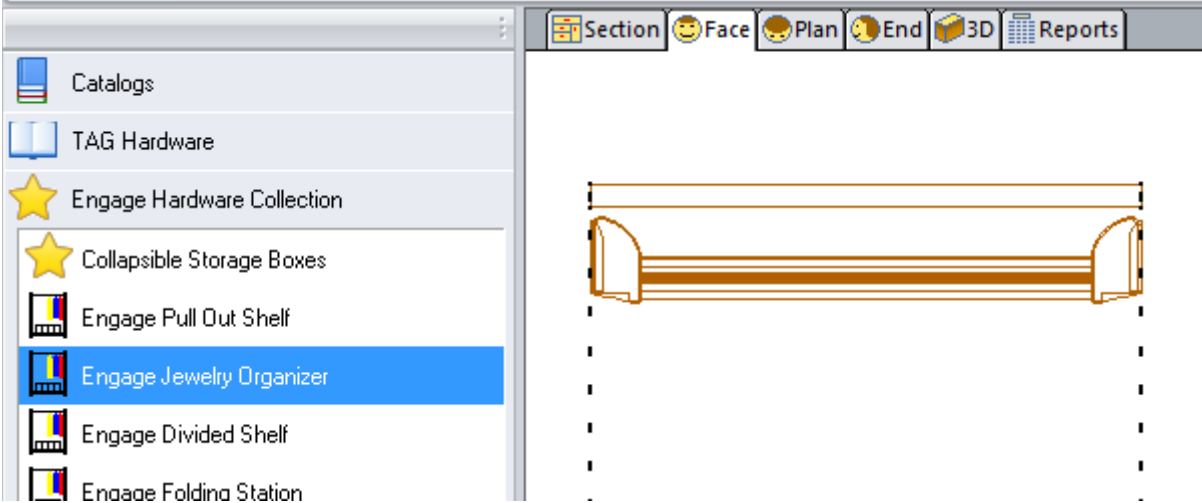
\*At the Section Editor, ensure that the End Type for the Left and Right Ends is set to No End.



Access the Objects button the sidebar.

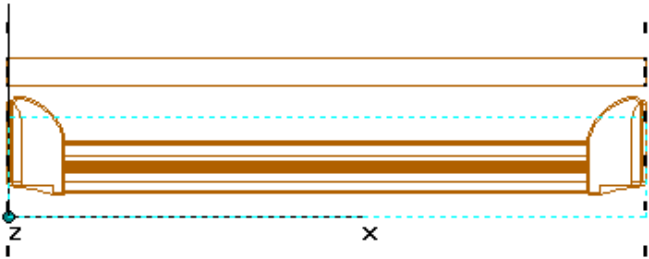


While holding the left mouse button, drag the desired TAG Hardware Object from the catalog and place it within the assembly.



With the TAG Hardware Object selected note that you can modify the attributes for that object.

| Attributes          |              |
|---------------------|--------------|
| Align to lineboring | True         |
| Bore by Opening     | False        |
| Engage Fabric Color | Room Default |
| Engage Frame Color  | Room Default |



## TAG Hardware – Integrated Hardware Objects

### Shoe Fence

Set the TAG\_Shoe Fence Room Parameter to True

Place a Shoe Shelf in any Closet Assembly.\*

The Elite Shoe Fence can also be enabled/disabled via the Use TAG Shoe Fence attribute in the sidebar.\*\*

Notes:

\*A Shoe Shelf must exist in the assembly in order for the Assembly Attribute to appear.

\*\*If a Shoe Fence does not appear after following all of the above steps then you should verify the Shoe Lip part includes a valid Width in your Closet Construction Method.

### Tilt-Out Hamper

Insert any Closet Assembly which does not include End Panels.

At the Assembly level – Face view, section the unit to have a Door taller than 24”.

With this door selected, click on Hinge in the sidebar and set it to Hinge on the Bottom.

Note: the Width of the Door AND the Width of the Opening must be equal to or greater than the width of the expected Tilt Out Hamper.

If your opening width is correct you are still not displaying a Tilt Out Hamper on a Bottom Hinged Door then verify that your Reveals allow the Door to be wider than the opening.

### Closet Rods

TAG Hardware Closet Rods are integrated into the Closet Rod Materials and Closet Rod Material Schedules which will display the correct 3D models for the selected product.

From Job, Room or Assembly Properties go to the Closet icon, Hardware tab and select the desired Closet Rod.

## **Valet Pins**

Valet Pins are triggered via Closet Assembly Attribute: Valet Pin which is visible when a Partition object is selected.

Click on the partition, select the 'Valet Pin' attribute in the sidebar and set it to Yes.

## **Drawer Face Adapters**

Drawer Face Adapters are automatically enabled when a False Front added to the Assembly Face is in the same location as a TAG Hardware Object.

## Revisions

### TAG Hardware v1.9.1

- Added the 'Mount Hole Y Position' attribute.